

Former Directors-General

First Director-General June 1974–March 1993

UMESAO Tadao (deceased) Ethnology, comparative study of civilizations

Second Director-General April 1993–March 1997

SASAKI Komei (deceased) History of agriculture in East and South Asia

Third Director-General April 1997–March 2003

ISHIGE Naomichi Cultural anthropology

Fourth Director-General April 2003–March 2009

MATSUZONO Makio Social anthropology

Current Director-General

Fifth Director-General April 2009–

SUDO Ken'ichi Social anthropology

Governing Body

Board of Advisors as of April 1, 2015

The advisors discuss the Museum's management, and operational issues of critical importance, at request of the Director-General.

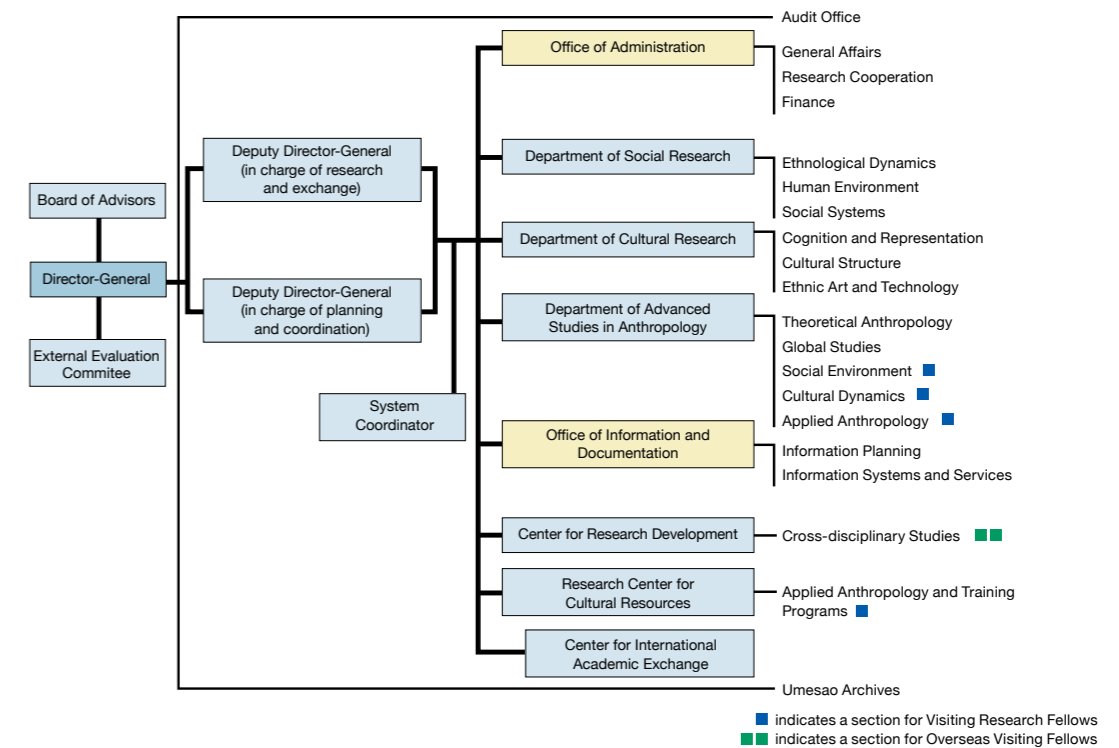
KURIMOTO Eisei	Professor, Graduate School of Human Sciences, Osaka University
KURITA Hiroyuki	Director, Information Collaboration Center, Tokyo University of Foreign Studies
MATSUDA Hiroshi	Professor, Faculty of Social Relations, Kyoto Bunkyo University
MATSUDA Motoji	Professor, Graduate School of Letters, Kyoto University
TOMIZAWA Hisao	Professor, School of International Relations, University of Shizuoka
UENO Hiroko	Professor, Faculty of Sociology, Toyo University
WATANABE Yoshio	Professor, Faculty of Letters, Kokugakuin University
YAMANASHI Toshio	Director, The National Museum of Art, Osaka
YOSHIOKA Masanori	Professor, Graduate School of Intercultural Studies, Kobe University
IKEYA Kazunobu	Director, Department of Cultural Research, National Museum of Ethnology
KISHIGAMI Nobuhiro	Deputy Director-General (in charge of research and exchange), National Museum of Ethnology/ Director, Center for International Academic Exchange
NISHIO Tetsuo	Director, Department of Social Research, National Museum of Ethnology
NOBAYASHI Atsushi	Professor, Research Center for Cultural Resources, National Museum of Ethnology
SASAHARA Ryoji	Professor, Department of Cultural Research, National Museum of Ethnology/ Course-Director, Department of Regional Studies, School of Cultural and Social Studies, SOKENDAI (The Graduate University for Advanced Studies)
SUZUKI Nanami	Director, Center for Research Development, National Museum of Ethnology
TERADA Yoshitaka	Director, Department of Advanced Studies in Anthropology, National Museum of Ethnology
YOSHIDA Kenji	Deputy Director-General (in charge of planning and coordination), National Museum of Ethnology/ Director, Office of Information and Documentation

External Evaluation Committee as of April 1, 2015

The committee meets to inspect and evaluate the Museum's research and educational activities at request of the Director-General.

ADACHI Jun	Deputy Director General, National Institute of Informatics
HACHIMURA Kozaburo	Project Professor, College of Information Science and Engineering, Ritsumeikan University
HIROTOMI Yasuyuki	Chairman, The Resona Foundation for Asia and Oceania
HORII Yoshitane	President, KANSAI-OSAKA 21st Century Association
KUROYANAGI Toshiyuki	Vice-President, Japan International Cooperation Agency
KOIZUMI Junji	Specially Appointed Professor, Osaka University
MIWA Karoku	President, Non-Profit Organization "Japan Conservation Project"
MIYATA Ryohei	President, Tokyo University of the Arts
YAMAMOTO Matori	Professor, Faculty of Economics, Hosei University

Organization Chart as of April 1, 2015



Staff as of April 1, 2015

Category	Director-General	Prof.	Assoc. Prof.	Assist. Prof.	Project Prof.	Subtotal	Clerical and Technical Staff	Total
Staff	1	24	21	8		54	46	100
Visiting Research Fellows		8	6			14		14
Overseas Visiting Fellows		0	3			3		3
Director-General	1					1		1
Audit Office							1	1
Office of Administration							26	26
Office of Information and Documentation							21	21
Research Departments		16	12	3		31		31
Center for Research Development		4	4	3		11		11
Research Center for Cultural Resources		4	5	2		11		11

Note: Visiting Research Fellows and Overseas Visiting Fellows are not included in the numbers given for "Staff" members.

Budget

FY2014		FY2015	
Category	(millions of yen)	Category	(millions of yen)
Salaries	1,178	Salaries	1,128
Others	1,822	Others	1,536
Education and research	1,294	Education and research	1,033
General management costs	447	General management costs	503
Facilities	81	Facilities	0
Total	3,000	Total	2,664

Note: These figures are from the revised budget.

Note: These figures are from the annual budget.

Evaluation

As a member of the National Institutes for the Humanities (one of the Inter-University Research Institute Corporations), the Museum is implementing mid-term and annual plans based on the Ministry of Education, Culture, Sports, Science, and Technology's six-year mid-term plan. Our progress to date has received high marks from the National University Corporation Evaluation Committee. In addition, the Museum, which implements its own self-inspection and self-evaluation programs, drew up a "Self-inspection Report" to show the progress of its research and educational activities.

Through its External Evaluation Committee, the Museum reports the committee members' comments, minutes of the committee meetings, and the information contained in the "Self-inspection Report". This report is distributed among faculty, staff and other stakeholders of the Museum, and is used for making improvements in its administration.

Facilities

The Basic Concept of the Museum Design

The Museum consists of low-rise buildings which naturally blend with the surrounding park environment. In designing the buildings, special emphasis was placed on the aesthetics of traditional Japanese architecture. Each floor of the Museum's main building is composed of several blocks. While the outer walls of these blocks have no openings for natural lighting, plenty of light is let in through the inner courtyards (patios). The patios provide a sense of openness and connection with the outer world, and are also used as open-air exhibition space.

Each floor is designed to be dedicated to a specific purpose, namely, storage on the first floor, exhibitions on the second, and research on the third and fourth. Elevators and staircases provide direct access to these floors. As the route is laid out in a manner that allows for a circular trip, visitors can either go through all the exhibitions, or choose to visit certain exhibitions of interest.

In addition, in order to make the Museum barrier-free and universally accessible, changes such as the installation of Braille labels are ongoing.

Total area of grounds: 40,821 m²
Ground area occupied by the museum buildings: 18,177 m²
Total floor space: 52,648 m²

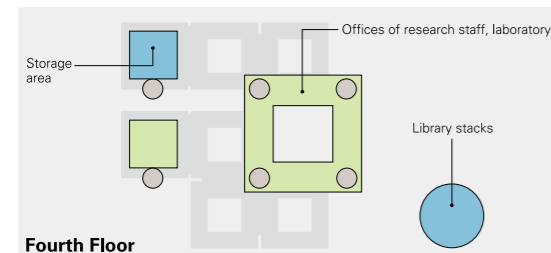
Basement 3,015 m²

Ground Floor 17,410 m²

Entrance hall, central patio, restaurant, Special Exhibition hall, storage area and museum shop.

Second Floor 16,830 m²

Exhibition halls, patio, central patio, multifunctional terminal room, administration offices, Special Exhibition hall and auditorium (seating capacity for 462 persons).



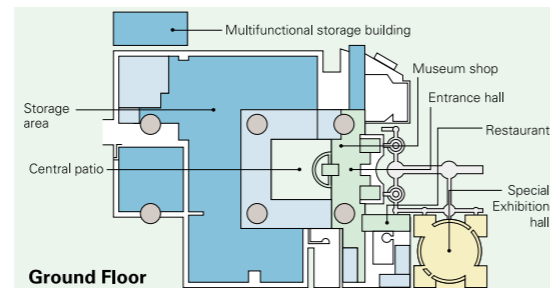
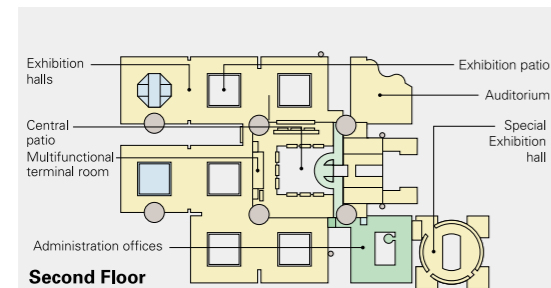
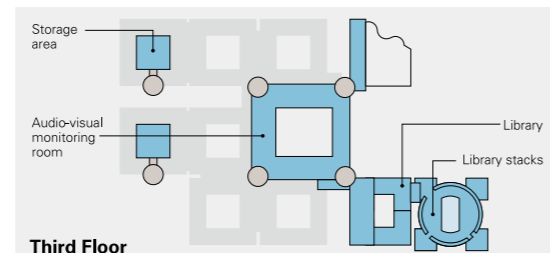
Third Floor 7,340 m²

The library, library stacks, audio-visual monitoring room and storage areas.

Fourth Floor 7,207 m²

Offices of research staff members, laboratories, library stacks, and storage area.

Roof top 846 m²



Staff Members as of April 1, 2015

Director-General

SUDO Ken'ichi

Audit Office

TAKEDA Yoshimasa
Director

Office of Administration

TAKEDA Yoshimasa
Director

General Affairs Section

TOJIMA Yoshihiro
Head

MIZUNO Norihito
Assistant Head

Research Cooperation Section

FUJII Nobuharu
Head

KITAMURA Toshiya
Assistant Head

Finance Section

NAKAI Akira
Head

YAMAUCHI Koji
Assistant Head

Deputy Director-General
(in charge of research and exchange)

KISHIGAMI Nobuhiro
Professor,
Center for Research Development

Office of Information and Documentation

YOSHIDA Kenji
Director

Information Planning Section

KAMEI Koji
Head

KANEKUNI Seiji
Assistant Head

Information Systems and Services Section

ISHIZAKA Yasuo
Head

IMANAKA Hiroyuki
Assistant Head

Deputy Director-General
(in charge of planning and coordination)

YOSHIDA Kenji
Professor,
Research Center for Cultural Resources

Department of Social Research

NISHIO Tetsuo
Director

Professors

ASAKURA Toshio
Social structures in East Asia;
Korea, Japan

HAN Min
Social anthropology; China

INTOH Michiko
Prehistory of Oceania;
Oceania, Island Southeast Asia

KONAGAYA Yuki (Joint Appointment)
Cultural ecology and cosmology;
Central Asia, Mongolia

MATTHEWS, Peter J.
Ethnobotany, prehistory,
crop plant biogeography; Asia, Pacific

NISHIO Tetsuo
Linguistics, Arab culture;
Middle East, North Africa

SEKI Yuji
South American archaeology, cultural
anthropology

YOKOYAMA Hiroko
Cultural anthropology,
Chinese society and culture

Associate Professors

MISHIMA Teiko
Anthropology, international migration;
Senegal, West Africa

OTA Shimpei
Sociocultural anthropology;
Northeast Asia

SATO Koji
Architectural history, ethno-architecture;
Southeast Asia, Oceania

UDAGAWA Taeko
Cultural anthropology, gender studies;
Italy, Mediterranean Europe

Assistant Professor

YOSHIOKA Noboru
Linguistics, South Asian studies

System Coordinator

SONODA Naoko
Professor,
Research Center for Cultural Resources

Department of Cultural Research

IKEYA Kazunobu
Director

Professors

DEGUCHI Masayuki
Third sector research,
civil society studies

IKEYA Kazunobu
Environmental anthropology,
cultural geography;
Southern Africa, Japan

MORI Akiko
Cultural anthropology,
ethnography; Central Europe,
Germany, Austria, Japan

SASAHARA Ryoji
Folk culture, performing arts; Japan

SUGIMOTO Yoshio
Social anthropology; Sri Lanka,
South India

TAKEZAWA Shoichiro
African history,
history of anthropological thought;
West Africa

Associate Professors

HIROSE Koujiro
Japanese religious history, folklore

SHINMEN Mitsuhiro
Science of religion; Eastern Europe

SUZUKI Motoi
Anthropological perspectives
on development assistance evaluations

YAMANAKA Yuriko
Comparative study of traditions
on Alexander the Great;
West Asia, Iran

Assistant Professors

FUJIMOTO Toko
Cultural anthropology,
Central Asian studies

SAITO Reiko
Ainu and Northern indigenous
peoples studies, material culture;
North Pacific Rim

Department of Advanced Studies in Anthropology

TERADA Yoshitaka
Director

Professors

SAITO Akira
Ethnohistory; Latin America

SASAKI Shiro
Socioeconomic history of reindeer-breeders and forest hunters; Northern Asia, Siberia

TERADA Yoshitaka
Ethnomusicology, performing arts of Asia

Associate Professors

IIDA Taku
Ecological anthropology, fisher studies; Madagascar, Japan

KIKUSAWA Ritsuko
Linguistics, Austronesian languages

MARUKAWA Yuzo
Informatics of association, information service for cultural assets

MATSUO-GOGATE Mizuho
Cultural anthropology, South Asian Studies

Center for Research Development

SUZUKI Nanami
Director

Professors

HIRAI Kyonosuke
Economic anthropology, anthropology of work; Southeast Asia

KISHIGAMI Nobuhiro
Cultural anthropology, Inuit studies; North America

SUZUKI Nanami
Cultural anthropology, culture of medicine, life-design studies, American and European medieval social history

TSUKADA Shigeyuki
Ethnohistory; Southern China

Associate Professors

KASHINAGA Masao
Ethnography of Southeast Asia; Vietnam, Tai area

MINAMI Makito
Ecological anthropology; South Asia

MIO Minoru
Religious anthropology; South Asia, India

NIWA Norio
Social anthropology; Oceania

Assistant Professors

ITO Atsunori
Social anthropology, Native American studies, indigenous arts and intellectual property issues

KAWAI Hironao
Social anthropology, Ethnological studies of Han Chinese

SUGASE Akiko
Anthropology, Middle Eastern area study

Research Center for Cultural Resources

NOBAYASHI Atsushi
Director

Professors

NOBAYASHI Atsushi
Ethnoarchaeology, material culture, Austronesian cultures; East Asia, Formosa

NOBUTA Toshihiro
Social anthropology, Southeast Asian Studies

SONODA Naoko
Conservation science

YOSHIDA Kenji
Anthropology of expressive culture; Africa, Europe, Japan

Associate Professors

FUKUOKA Shota
Ethnomusicology; Southeast Asia, Indonesia

HAYASHI Isao
Social structure, cosmology, risk and disaster; Melanesia, Polynesia, Japan

HIDAKA Shingo
Conservation science

UEBA Yoko
Textile and handcraft; South Asia, Middle East

YAMAMOTO Yasunori
Museum informatics

Assistant Professors

KAWASE Itsushi
Visual anthropology

TERAMURA Hirofumi
Culture and information science, Archaeological information

Center for International Academic Exchange

KISHIGAMI Nobuhiro
Director

HAN Min

Professor,
Department of Social Research

INTOH Michiko

Professor,
Department of Social Research

KIKUSAWA Ritsuko

Associate professor,
Department of Advanced Studies in Anthropology

MATTHEWS, Peter J.

Professor,
Department of Social Research

SAITO Akira

Professor,
Department of Advanced Studies in Anthropology

YAMANAKA Yuriko

Associate Professor,
Department of Cultural Research

Umesao Archives

Director

YOSHIDA Kenji

Professor,
Research Center for Cultural Resources

Visiting Research Fellows

Department of Advanced Studies in Anthropology Cultural Dynamics Section

NARUM, Paul

Adjunct Instructor, Foreign Language Research and Teaching Center, Tokyo Institute of Technology
Research into Variations in Cultural Expressions, and Their Application

Applied Anthropology Section

IIZUMI Naoko

Chairperson, Department of Japanese Sign Language Interpretation, Setagaya Welfare Professional Training College
Implementing Curricula for Training Academic Sign Language Interpreters and Their Evaluation

Research Associates

Department of Advanced Studies in Anthropology

Social Environment Section

SUENARI Michio

Visiting Researcher, Research Institute of Asian Cultures
Anthropological Research on the Changes of Ancestral Cults in East Asia

Cultural Dynamics Section

CHEN Tien-shi

Associate Professor, Waseda University
Migration and Asian Diaspora in Japan

KITAHARA Jirota

Associate Professor, Center for Ainu and Indigenous Studies, Hokkaido University
Comparative Study between the Aynu, Japan and Neighboring Cultures

YAMADA Takako

Professor Emeritus, Kyoto University
A Study on the Construction and Maintenance of Micro-regional Communitality on Multi-cultural Landscapes

Applied Anthropology Section

HAYASHI Fumiki

Professor, Faculty of Foreign Studies, Kanda University of International Studies
Anthropological Study of Korean Food Culture

ICHIDA Yasuhiro

Chief Instructor, Sign Language Interpretation Course, College of the National Rehabilitation Center for Persons with Disabilities
A Research Project to Develop a Method for Teaching Sign Language Linguistics Based on Features of Japanese Sign Language

IITAKA Shingo

Lecturer, Faculty of Cultural Studies, University of Kochi
Historical Anthropological Study on Memory and Records of Japanese Administration in Asia and Pacific Region

OSUGI Yutaka

Professor, Research and Support Center on Higher Education for the Hearing Impaired and Visually Impaired, Tsukuba University of Technology
A Preliminary Survey toward the Establishment of a Sign Linguistics Initiative

SEKIMOTO Teruo

Professor Emeritus, the University of Tokyo
An Anthropological Study of Humans and Textiles

SHIMIZU Ikuro

Professor, Department of Architecture and Building Engineering, College of Engineering, Shibaura Institute of Technology
A Comparative Study on the Construction of Wooden Architecture in Southeast Asia

TAKAGI Ryo

Associate Professor, Faculty of Business Administration, Kanagawa University
Social Movements in Thailand: An Anthropological Study

Research Center for Cultural Resources

Applied Anthropology and Training Programs Section

MAEGAWA Keiji

Professor, Graduate School of Humanities and Social Sciences, University of Tsukuba
A Comparative Study of Organizational Culture from the Viewpoint of Globalization

Overseas Visiting Fellows

Center for Research Development

Cross-disciplinary Studies

CHU Xuan Giao

Senior Researcher, Institute of Cultural Studies, Vietnam Academy of Social Sciences (Vietnam)
July 1, 2014 - June 29, 2015
Historical Anthropological Research on Belief and Social Change in the Nung Ethnic Group, Vietnam

CISSE, Mamadou

Professor, Department of Linguistics and Language Sciences, Faculty of Arts and Human Sciences, Cheikh Anta Diop University of Dakar (France)
August 3, 2015 - December 17, 2015
Linguistic-anthropological Research on Arabic Use by African and Arabic Merchants in Commerce in Asia

FISCHER, Susan Donna

Adjunct Professor, The City University of New York, Graduate Center (U.S.A.)
September 16, 2015 - October 30, 2015
Consultation on Sign Language Related Projects

KIM Chang-ho

Curator, The National Folk Museum of Korea (Korea)
July 1, 2014 - June 29, 2015
The Improving Access to Collections Using Digital Signage

KUMAWAT, Shyam Sunder

Lecturer, Department of Sociology, Government Meera Girl's College, Udaipur (India)
June 8, 2015 - July 15, 2015
Social Transformation and Religion in Rajasthan, India

ORBELYAN, Gevorg

Vice Director, Yerevan History Museum (Armenia)
December 14, 2015 - November 24, 2016
An Anthropological Study of Museums and Community

SAM Sam-Ang

Dean, Faculty of Arts, Letters & Humanities, Paññāsāstra University of Cambodia
Advisor (Rank: Vice Minister), Ministry of Culture and Fine Arts (Cambodia)
August 10, 2015 - July 29, 2016
A Study on the Role of Audiovisual Resources in Safeguarding Intangible Cultural Heritage

WILDE, Guillermo

Associate Professor, Institute for Advanced Social Studies, National University of San Martin (Argentina)
January 16, 2015 - January 14, 2016
A Comparative Study on Christian Missionary Work and Cultural Accommodation in Latin America and Asia

Those who have been or will be in Minpaku in FY2015, as of April 1, 2015.
(In alphabetical order by family name.)

Research Fellows

HAMADA Akinori

Research on Academic Trends in Anthropology and Ethnology

KANEDA Jumpei

Practical Research on Creating and Exhibiting Academic/Educational Contents for Visitors

NAGATA Atsumasa

Research on Academic Trends in Anthropology and Ethnology

SUEMORI Kaoru

The Development of a Collection Management System in Museum

TODA Mikako

A Theoretical and Practical Study for the Promotion of Cultural Resources at the National Museum of Ethnology

YAGI Yuriko

Collection and Provision of Information on Competitive Research Funds and Research Policies to Promote Creative and Advanced Research by Museum Staff

Project Research Fellow

SAGARA Keiko

Sign Language Linguistics from Typological and Historical Perspectives